

REVISONS			DATE	BY	
EOD	ZONE	REV	DESCRIPTION	DATE	BY
131166	A-1	B	ADDED SUPERSEDED BY 80071093 NOTE	28SEP14	M.V. TFE

PROPERTY AND CONFIDENTIAL INFORMATION. THIS DRAWING AND THE DESIGN HEREON ARE THE PROPERTY OF GROVE CRANES AND CONSTRUCTION EQUIPMENT COMPANY. NO PART OF THIS DRAWING OR THE DESIGN HEREON IS TO BE REPRODUCED OR TRANSMITTED IN ANY FORM OR BY ANY MEANS, ELECTRONIC OR MECHANICAL, INCLUDING PHOTOCOPYING, RECORDING, OR BY ANY INFORMATION STORAGE AND RETRIEVAL SYSTEM, WITHOUT THE WRITTEN PERMISSION OF GROVE CRANES AND CONSTRUCTION EQUIPMENT COMPANY. APPROVED BY THE COMPANY OFFICIALS AS SHOWN BY SIGNATURE AND DATE.

PRIVATE LABELING REQUIREMENT TO CONFORM TO ENGINEERING SPECIFICATION 253151194 AND COMPONENTS LISTED IN 900500-05-035.	ADDITIONAL APPROVALS	DATE	DATE	DATE	DATE	DATE	DATE	DATE

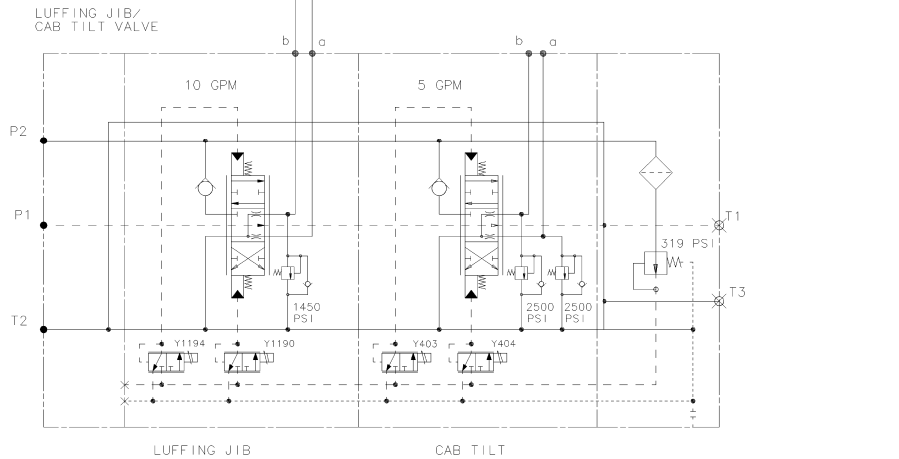
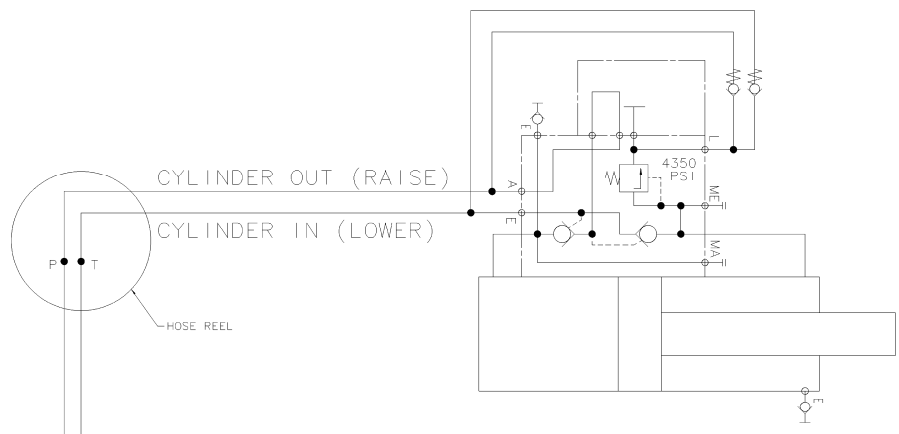
DO NOT SCALE DRAWING	CONTRACT NO.	DATE	DATE
TOLERANCES UNLESS OTHERWISE SPECIFIED		18DEC2015	18DEC2015
IN DIM DEF PLACES MM DIM	APPROVALS	18DEC2015	18DEC2015
N/A UNITS & PLACES IT DIM			
1.00" 2 PLACE DEC 1/8 DIM	DESIGN		
2.00" 3 PLACE DEC 1/4 DIM	BRIDGE		
3.00" 4 PLACE DEC 3/8 DIM	TRAILER		
4.00" 5 PLACE DEC 1/2 DIM	APPROVED BY		
5.00" 6 PLACE DEC 3/4 DIM			
6.00" 7 PLACE DEC 1" DIM			
7.00" 8 PLACE DEC 1 1/4 DIM			
8.00" 9 PLACE DEC 1 3/4 DIM			
9.00" 10 PLACE DEC 2" DIM			
N/A TO MATERIAL THICKNESS			

TITLE	HYDRAULIC SCHEMATIC	DATE	18DEC2015
NO.	RT890E4	DATE	18DEC2015
REV	AD 12381	DATE	18DEC2015
REV		DATE	

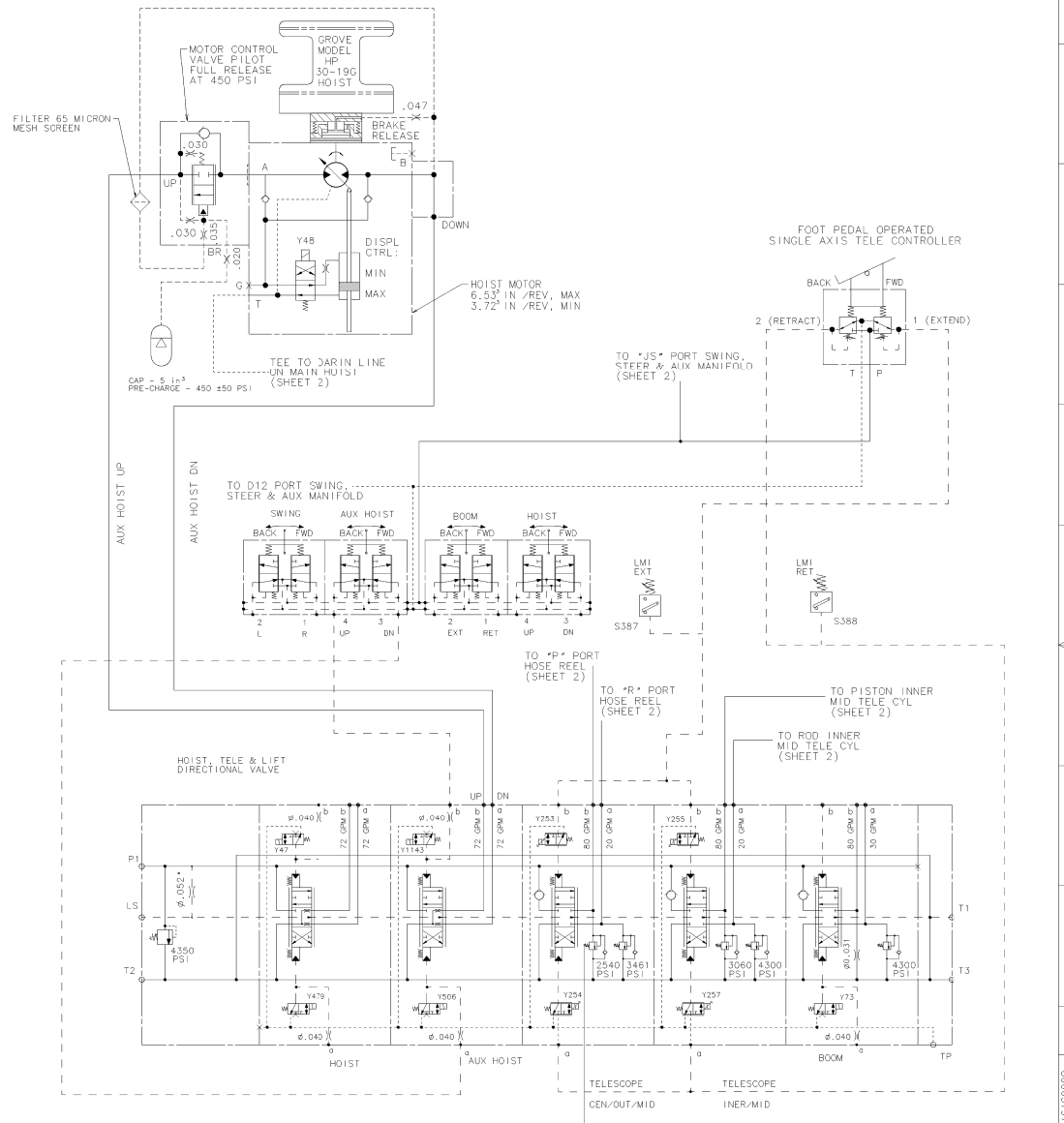
REV	80063797	DATE	18DEC2015
REV		DATE	

METRIC
SUPERSEDED BY 80071093

REVIEWS						
EO	206	REV	DESCRIPTION	DATE	BY	APP
131166	A-1	B	ADDED SUPERSEDED BY 80071093 NOTE	29SEP14	M.V.	TFE



LUFFING JIB (OPTION)



AUX HOIST (OPTION)

METRIC

SUPERSEDED BY 80071093

PRIVATE LABELING REQUIREMENT TO CONFORM TO ENGINEERING SPECIFICATION 25311194 AND COMPONENTS LISTED IN 900500-05-035.	ADDITIONAL APPROVALS DATE WELDING IF IN DOUBT ASK REMOVE ALL BURRS AND SHARP EDGES.	DATE MODEL (FIRST USE) RT890E4	3RD ANGLE PROJECTION 	DO NOT SCALE DRAWING TOLERANCES UNLESS OTHERWISE SPECIFIED IN DIM DEF PLACES MM DIM N/A 2.316" 3 PLACE DEC 10.0MM 32° ANGULAR DIM 32° N/A TO MATERIAL THICKNESS	CONTRACT NO. 129628 APPROVALS DATE 19802015 19802015 19802012	TITLE HYDRAULIC SCHEMATIC RT890E4 DWG NUMBER 80063797 SHEET NO. OF 08
---	--	--------------------------------------	--------------------------	---	---	--

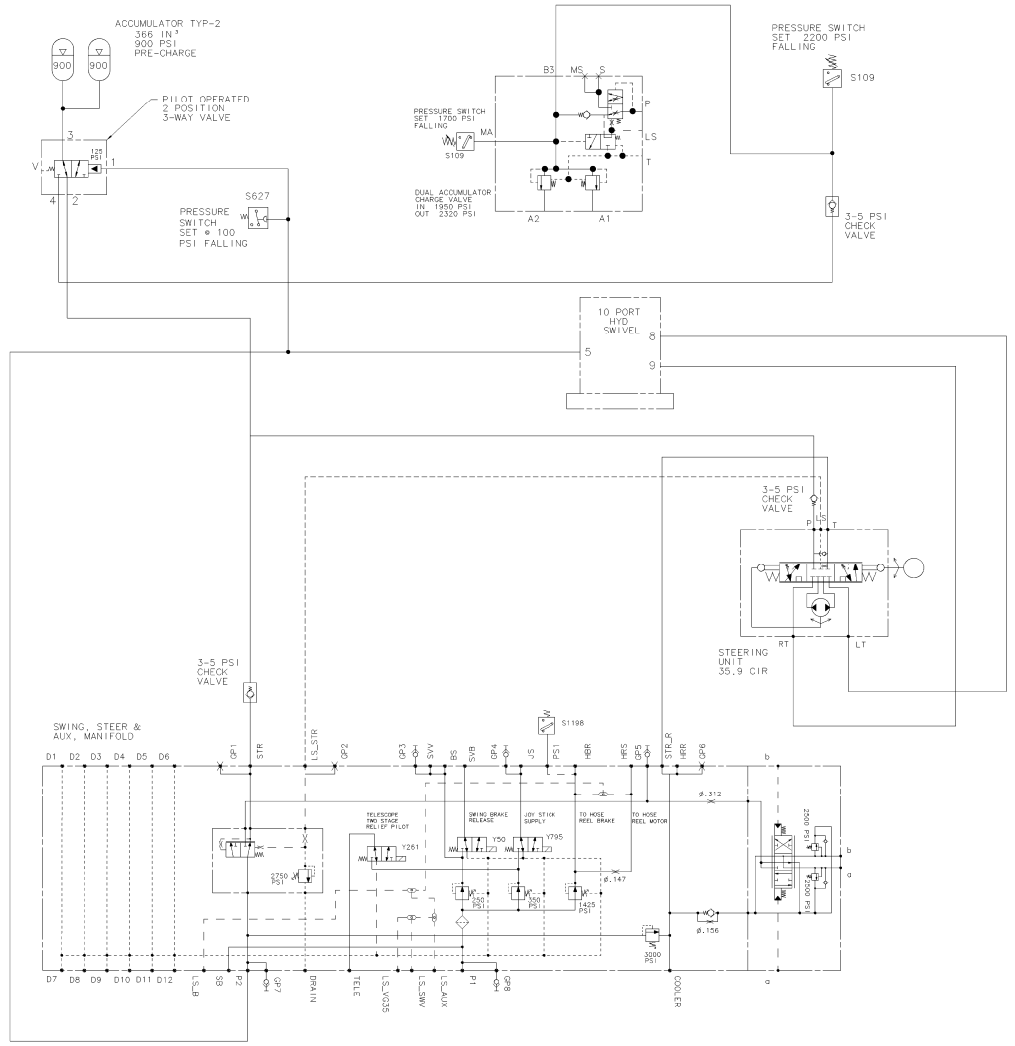
PROPRIETARY AND CONFIDENTIAL. INFORMATION ON THIS DRAWING AND THE DESIGN METHOD DESCRIBED HEREIN IS THE PROPERTY OF GROVE MANUFACTURING COMPANY AND SHOULD BE KEPT IN STRICTLY CONFIDENTIAL. ANY REPRODUCTION OR DISSEMINATION OF THIS DRAWING OR THE DESIGN METHOD DESCRIBED HEREIN WITHOUT THE WRITTEN PERMISSION OF GROVE MANUFACTURING COMPANY IS PROHIBITED. THE USER OF THIS DRAWING AND THE DESIGN METHOD DESCRIBED HEREIN SHALL BE RESPONSIBLE FOR OBTAINING ALL NECESSARY PERMITS AND APPROVALS OF ANY AGENCIES THAT MAY BE REQUIRED IN CONNECTION WITH THE DESIGN METHOD DESCRIBED HEREIN.

80063797

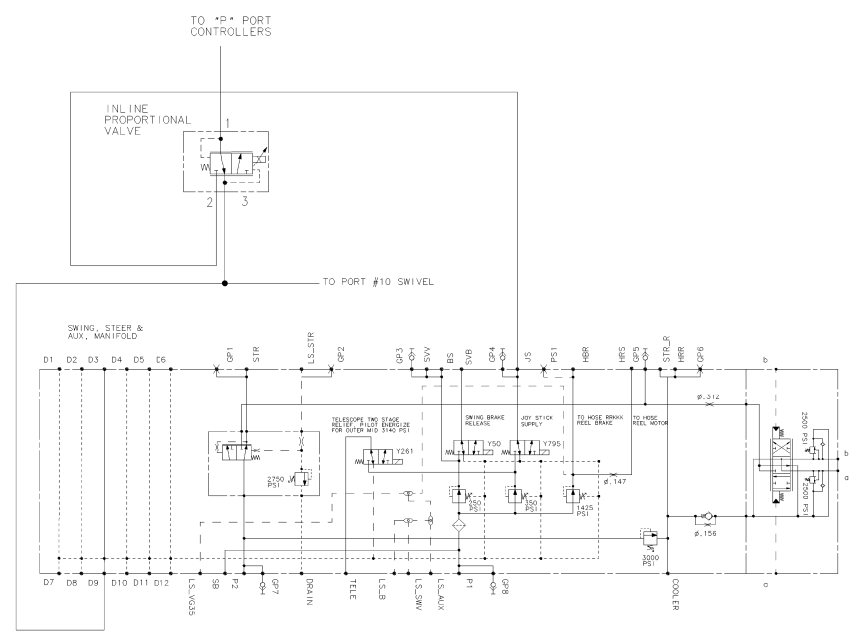
103

A

REVIEWS				DATE	BY
EO	ZONE	REV	DESCRIPTION		
131166	A-1	B	ADDED SUPERSEDED BY 80071093 NOTE	28SEP14	MLY TFE



SECONDARY FRONT STEER FOR C.E. CONFORMITY (OPTION)



PILOT PRESSURE REDUCTION FOR C.E. CONFORMITY (OPTION)

PROPRIETARY AND CONFIDENTIAL INFORMATION: THIS DRAWING AND THE TOOLS, MACHINES, EQUIPMENT AND MATERIALS SPECIFIED HEREIN ARE THE PROPERTY OF GROVE. GROVE SHALL BE RESPONSIBLE FOR THE PROTECTION OF THIS INFORMATION. THE USER OF THIS DRAWING SHALL BE RESPONSIBLE FOR THE PROTECTION OF THIS INFORMATION. THE USER OF THIS DRAWING SHALL BE RESPONSIBLE FOR THE PROTECTION OF THIS INFORMATION. THE USER OF THIS DRAWING SHALL BE RESPONSIBLE FOR THE PROTECTION OF THIS INFORMATION.

PRIVATE LABELING REQUIREMENT TO CONFORM TO ENGINEERING SPECIFICATION 425/1119/04 AND COMMENTS LISTED IN 000500-05-035.	ADDITIONAL APPROVALS	DATE	MATERIAL SPECIFICATIONS AND DIMENSIONS	DO NOT SCALE DRAWING	ISSUE NO. 129628
	MATERIALS		TOLERANCES UNLESS OTHERWISE SPECIFIED	CONTRACT NO.	
	STRESS		IN DIM DEF PLACES MM DIM	APPROVALS	DATE
	WELDING		N/A	18062015	
	WELD SYMBOLS		2.016" 3 PLACE DEC 10.0MM	18062015	
			32" ANGULAR DIM 32"	18062012	
			N/A TO MATERIAL THICKNESS		

METRIC
SUPERSEDED BY 80071093

GROVE	
HYDRAULIC SCHEMATIC	
RT890E4	
REV 006	REV NUMBER 80063797
REV B	

